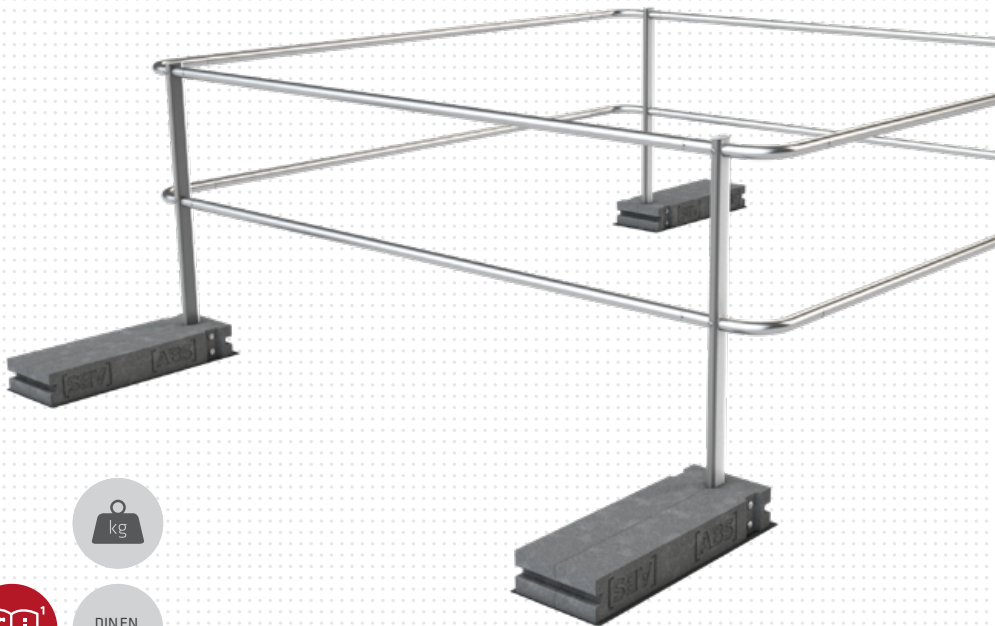


ABS Dome OnTop Weight

SG-DOME-2,5-G-B



MoA 280-03



Werkzeuge | Tools



Sicherheitshinweise | Safety instructions



- DE** Montageanleitung beachten (1) und Sicherheitshinweise beachten (2).
- EN** Comply with the installation manual (1) and Comply with the safety instructions (2).
- FR** Respecter la notice de montage (1) and Respecter les consignes de sécurité (2).
- NL** Montagehandleiding in acht nemen (1) and Veiligheidsinstructies in acht nemen (2).
- BGR** Спазвайте инструкциите за монтаж (1) and Спазвайте инструкциите за безопасност (2).
- DK** Følg monteringsvejledningen (1) and Følg sikkerhedshenvisningerne (2).
- ET** järgida montaažijuhendit (1) and järgida ohutusjuhiseid (2).
- FI** Noudata asennusohjeita (1) and Noudata turvallisuusohjeita (2).
- IT** Rispettare le istruzioni di montaggio (1) and Rispettare le istruzioni di sicurezza (2).
- PL** Przestrzegać zaleceń instrukcji montażu (1) and Przestrzegać zasad bezpieczeństwa (2).
- SK** Dodržujte návod na montáž (1) and Dodržujte bezpečnostné pokyny (2).
- SL** Sledite navodilom za namestitve (1) and Sledite varnostnim navodilom (2).
- ES** Observar las instrucciones de montaje (1) and Observar las indicaciones de seguridad (2).
- CS** Dodržujte návod k montáži (1) and Dodržujte bezpečnostní pokyny (2).
- HU** Vegye figyelembe az összeszerelési útmutatót (1) and Vegye figyelembe a biztonsági utasításokat (2).

Kontakte | Contact persons

Vertrieb & Technische Beratung Sales & Technical Support

+49 (0) 28 32 - 972 81 - 0
vertrieb@absturzicherung.de

Schulung Training

+49 (0) 28 32 - 972 81 - 148
schulung@absturzicherung.de

Montagevorbereitung Assembly

+49 (0) 28 32 - 972 81 - 260
service@absturzicherung.de

Mustertypenschild | Sample label

[ABS]

ABS SAFETY GMBH 3

Kevelaer, Germany
info@absturzicherung.de
www.absturzicherung.de

**Mustertypenschild /
Sample only**

**Chargennummer /
Batch number**

| | | |
|-----------|--|---|
| 6 | Normen / Standards | - |
| 7 | Max. Nutzer gleichzeitig (DIN EN 795:2012) Max. No. of simultaneous users | - |
| 11 | Modellnummer / Model number | - |
| - | - | - |
| - | - | - |
| - | - | - |

8

CE

0158

9

[ABS]
Z-14.9-688

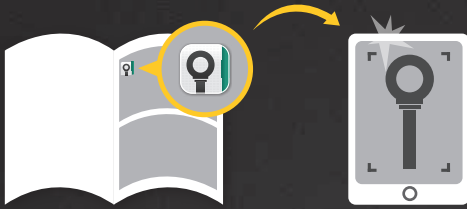
10

DEKRA
DEKRA



Montageschritte dokumentieren

Document assembly step



abs.lock-book.com



Nicht fallen lassen!
Do not drop!



Nicht fallen lassen!
Do not drop!

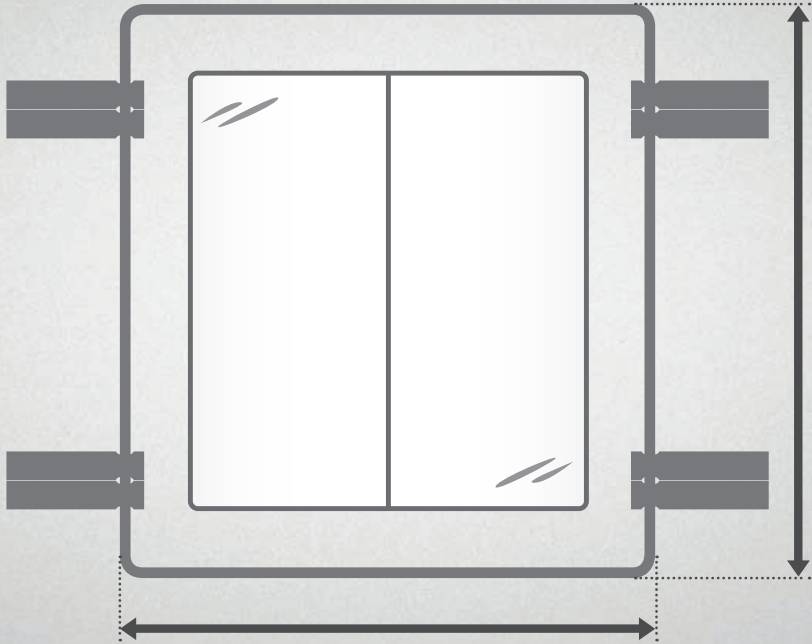


Ebener Untergrund!
Even surface!



Flach auflegen!
Put down flat!

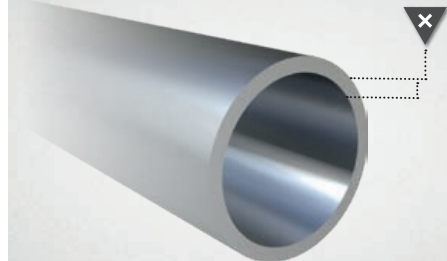


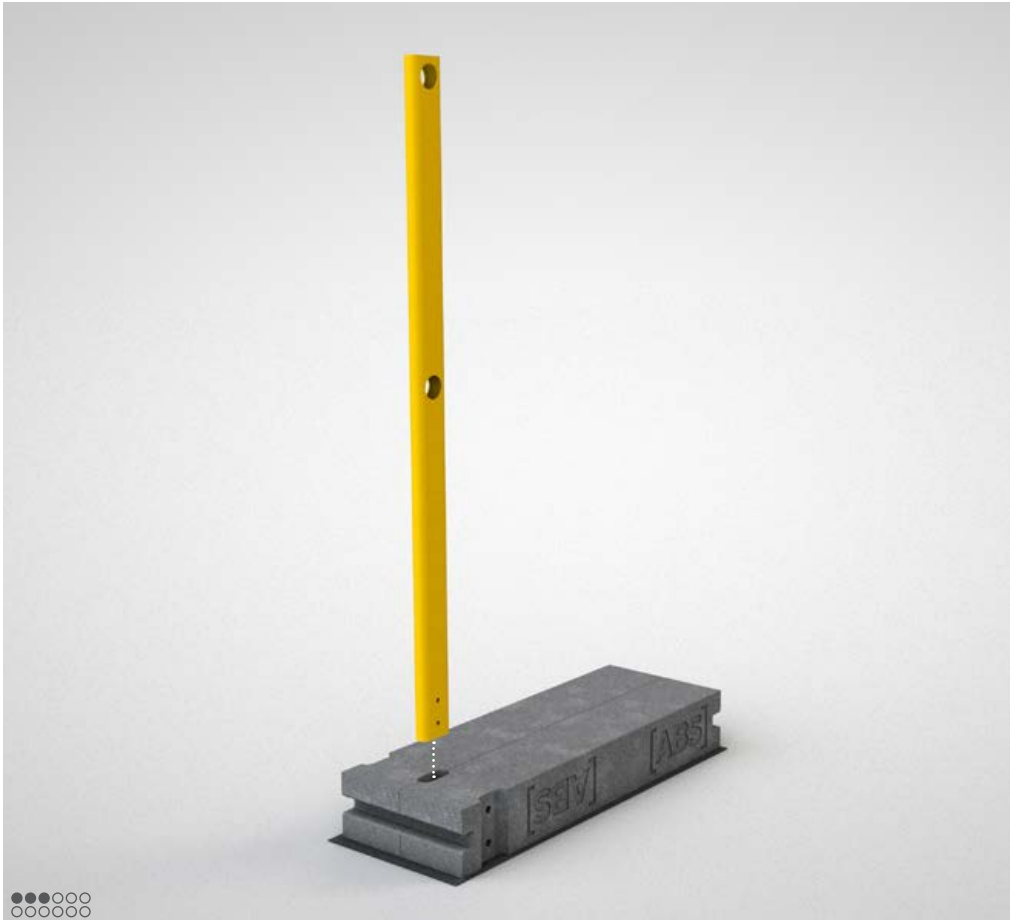
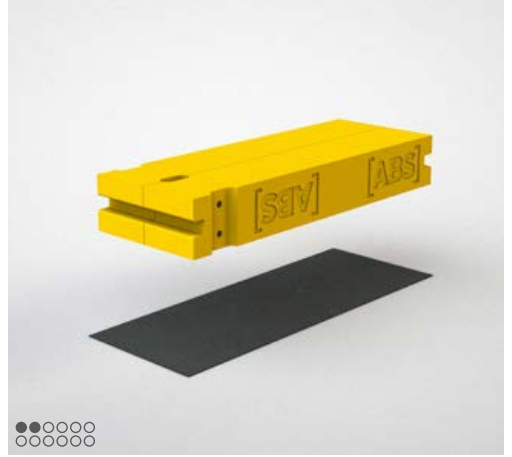
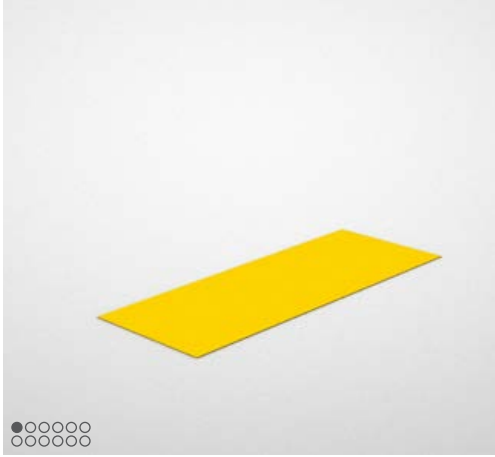


Optional

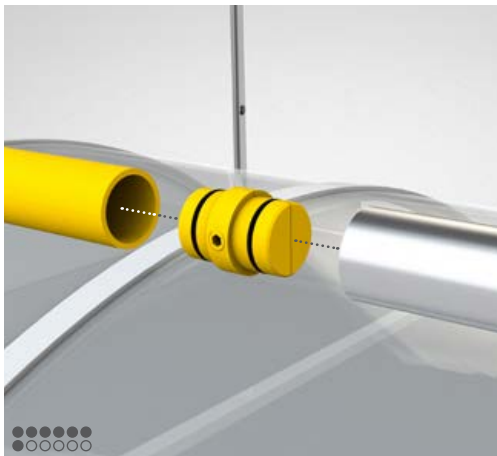
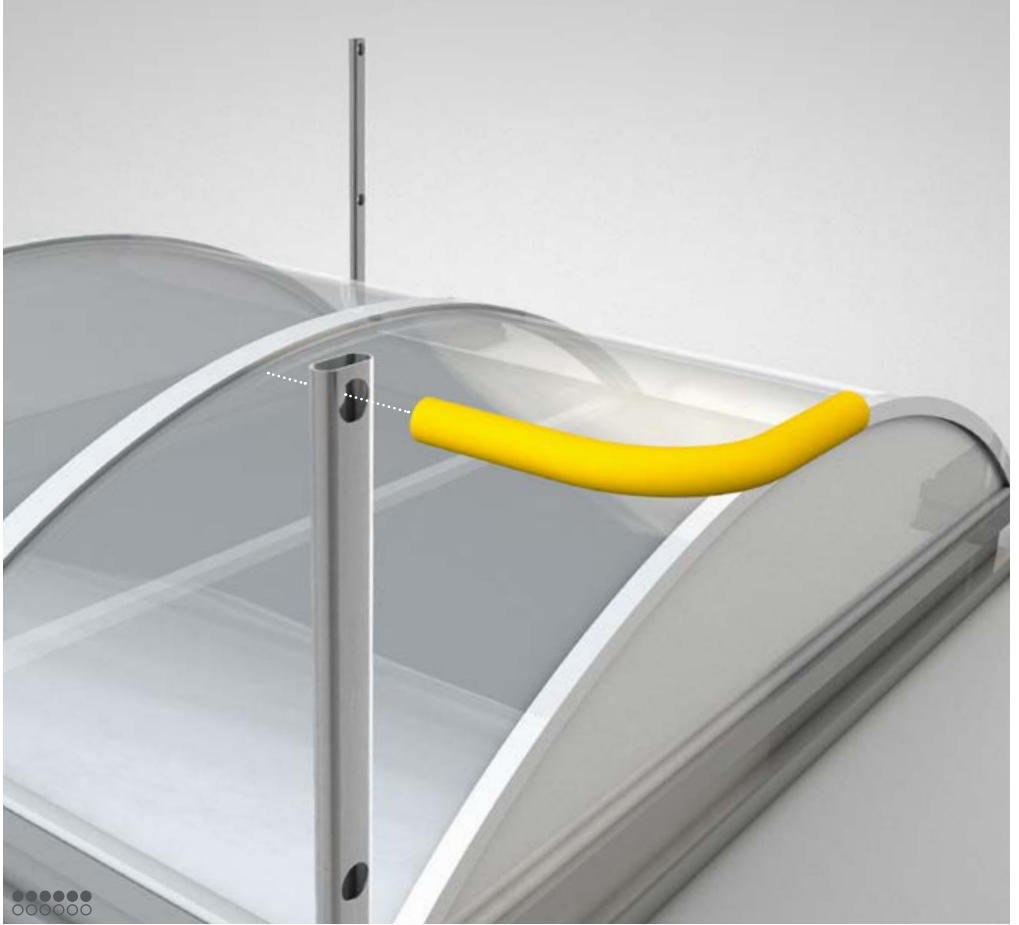


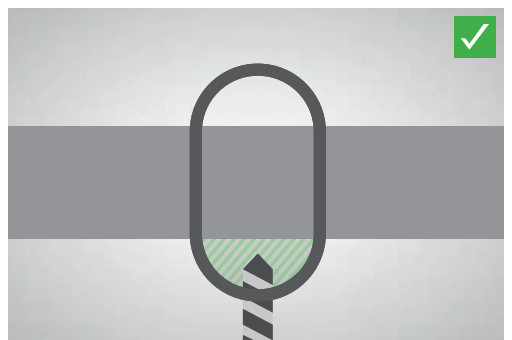
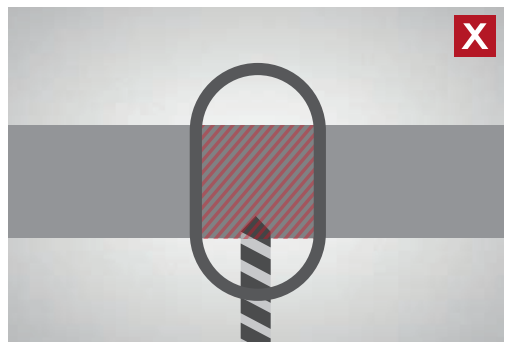
Entgraten
Deburring



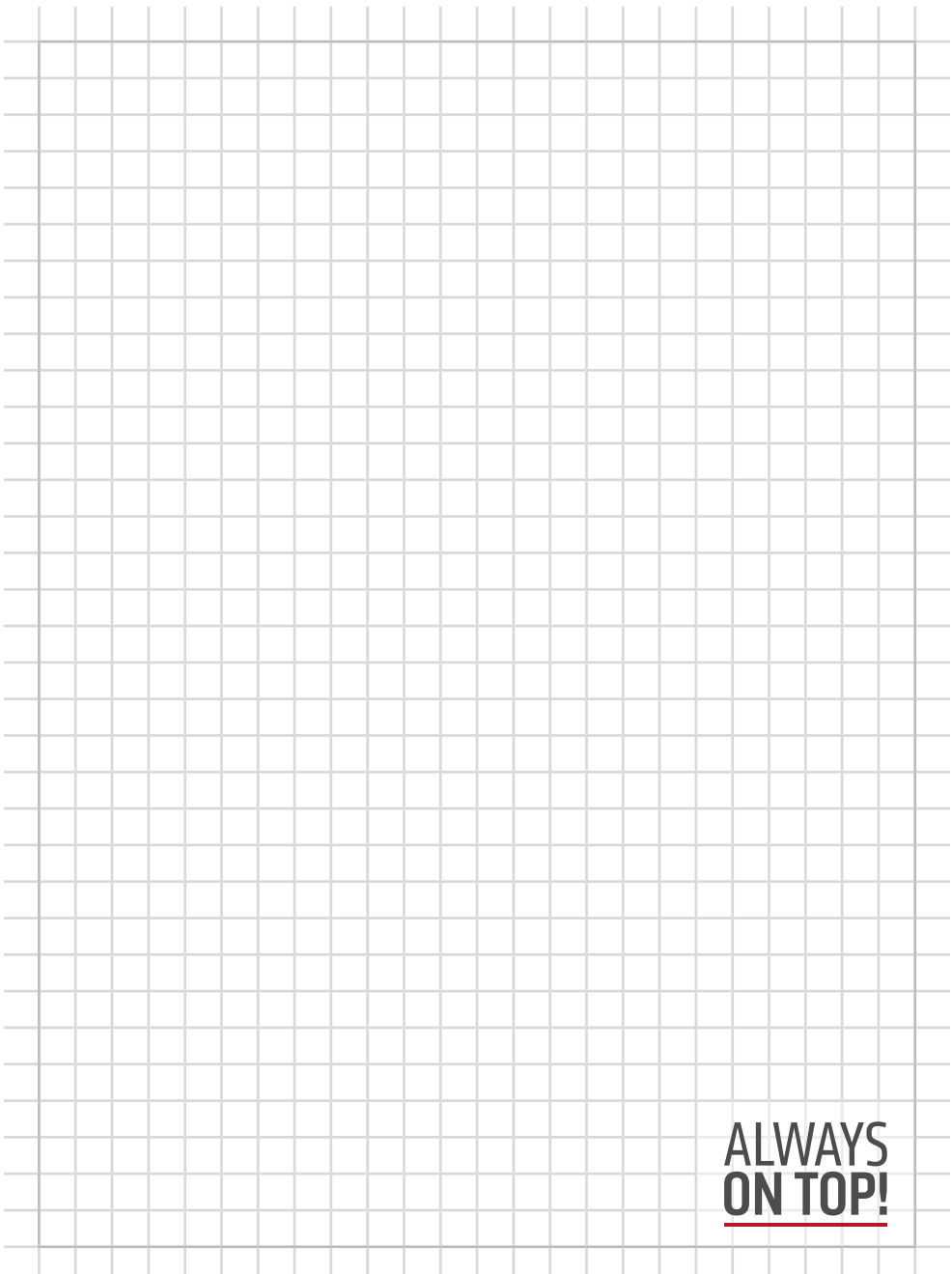












**ALWAYS
ON TOP!**

ALWAYS ON TOP!

ABS Safety GmbH

Gewerbering 3
D-47623 Kevelaer
Germany

Tel.: +49 28 32 972 81 - 0
Fax: +49 28 32 972 81 - 285

info@absturzsicung.de



www.absturzsicung.de



.de/en



.de/fr



.de/nl

EL 13 Juni 2023



[instagram.com/abssafety](https://www.instagram.com/abssafety)



[youtube.com/abssafetygmbh](https://www.youtube.com/abssafetygmbh)



[facebook.com/ABS.Safety](https://www.facebook.com/ABS.Safety)